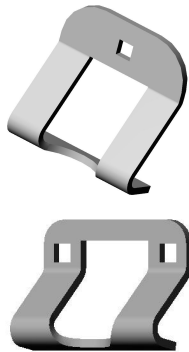


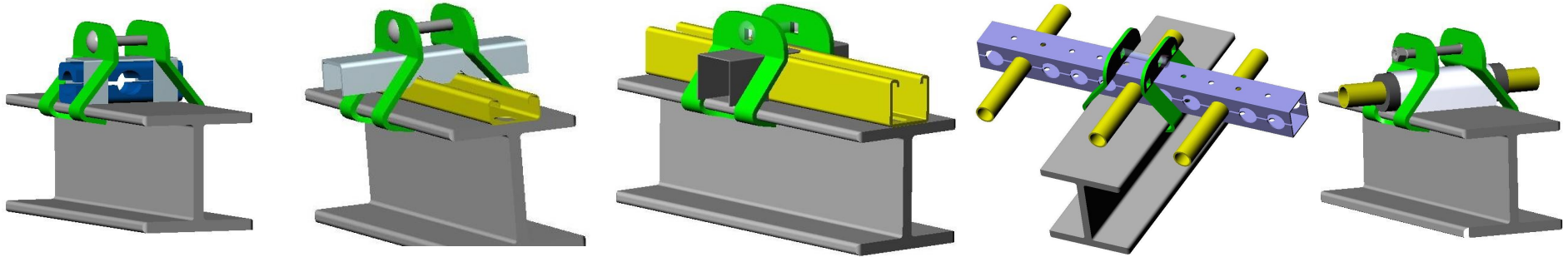
**NuClamp**

**Beam Clamps for Rectangular Channels and Tubes**

NuClamp quickly and securely attaches strut channels to I-beams or similar structural members. One version clamps at a 90 Degree angle. PN NC1235 allows struts to be clamped from a 45 degree to 90 degree angle. By adding simple cross bars, struts and pipes are attached in line on the center of flanges. Not only is this the fastest method on the market, it is the only way, short of welding, to clamp struts on an angle or in line on the center of the beam flange.



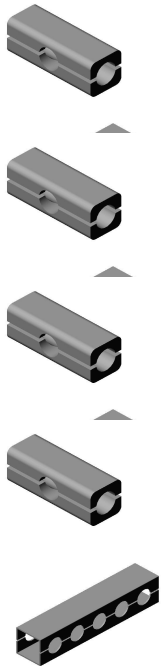
Part No.	Strut Size	Height	Description	Style	Coating	Qt. / Pkg.			
NC1210	1 5/8	13/16	Strut Beam Clamp	Single Bolt	Zinc	20			
NC1220	1 5/8	1 5/8	Strut Beam Clamp	Single Bolt	Zinc	20			
NC1225	1 5/8	1 5/8	Strut Beam Clamp	2 Bolt	Zinc	20			
NC1215	1 5/8	13/16	Strut Beam Clamp	2 Bolt	Zinc	20			
NC1235	1 5/8	1 5/8	Strut Beam Clamp	45 Degree Angle	Zinc	2			
NC1310	1 1/2	1 1/2	Square Beam Clamp	Single Bolt	Zinc	20			



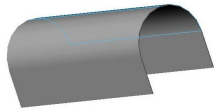
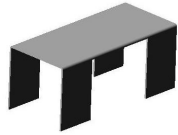
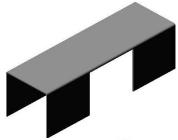
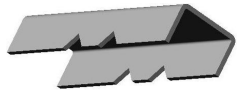
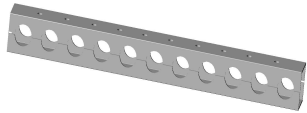
# NuClamp

## Cross Channels, Spacers, Adapters

The use of accessories allow many alternatives for attachment of pipes channels and tubes that would be difficult using other methods. This is just a sample of what is possible.

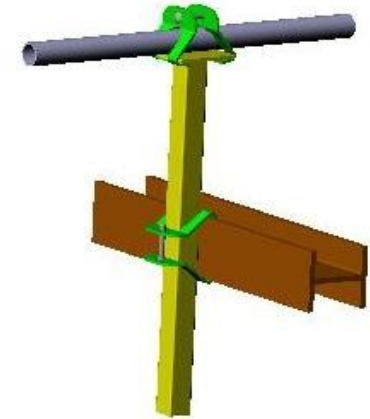
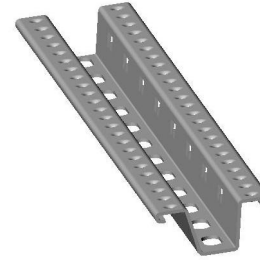
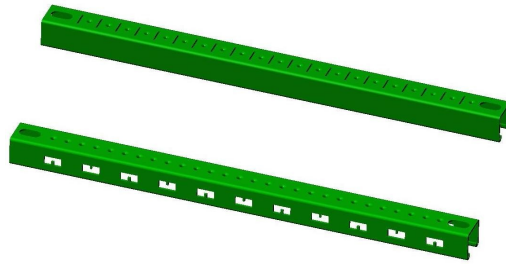
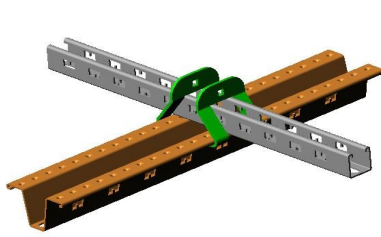


Part No.	Width	Length	Description	Style	Coating	Qt. / Pkg.			
NC3010	1 3/8		Pipe Grip- One 1/2" pipe		N/A				
NC3012	1 3/8		Pipe Grip- One 3/4" pipe		N/A				
NC3013	1 3/8		Pipe Grip- One 1" pipe		N/A				
NC3014	1 3/8		Pipe Grip- One 1 1/4" pipe		N/A				
NC3020	1 5/8	10"	Pipe channel with knock outs for 1/2, 3/4, and 1"		paint				



NC3031	1 5/8	20	Pipe channel with knock outs for 1/2, 3/4, and 1"		paint				
NC3030	1 5/8	4	Cross bar to clamp low profile strut		Zinc				
NC3050	1 5/8	6	Cross bar to clamp square strut		Zinc				
NC3050	1 5/8	4	Cross bar to clamp square strut		Zinc				
NC3070	1 5/8	6	Cross bar to clamp pipes or conduits in line on surface of beams		Zinc				
NC3080	1 5/8	6	Cross bar to shield and capture a insulation covered pipe.		Zinc				

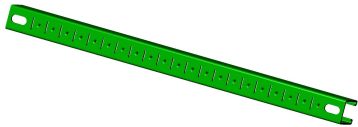
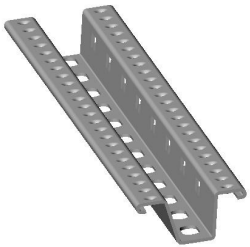
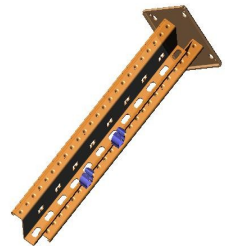




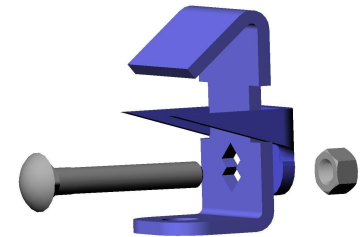
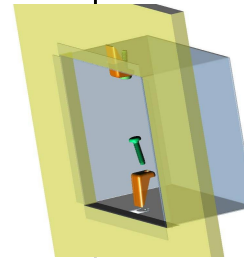
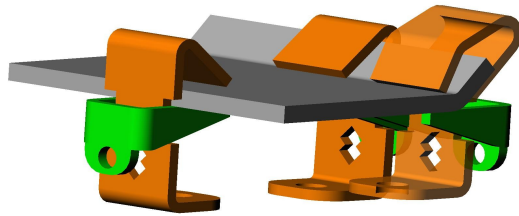
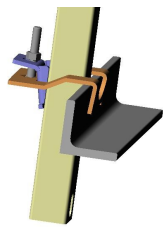
### Universal V-Strut Wall Mount and Strut Channel

The universal wall mount provides a flexible device for mounting hardware along and off a wall or other flat surface. Universal wall mounts hold pipes or channel horizontally or vertically and integrates other NuClamp products and industry products for un-paralleled flexibility. Dimpled holes are provided to allow self tapping screws for attaching pipe clamps or strapping. Beam clamps can be used to attach struts conduits and pipes. Slotted holes allow use of hardware designed for traditional struts. Special cutouts along the sides allow for quick attachment of strapping. These products together maximise the effectiveness of using a rechargeable power driver to connect hardware.

**NuClamp**



Part No.	Width	Length	Description	Style	Coating	Qt. / Pkg.			
NC2010	4	10	Universal Wall Mount		Paint	1			
NC2020	4	20	Universal Wall Mount		Paint	1			
NC2110	4"	24"	V-Strut		Paint	1			
NC2120	4"	48"	V-Strut		Paint	1			
NC2210	1 5/8	48"	Strut, Square	Self tap	Paint	1			
NC2221	1 5/8	120"	Strut, Square	Self Tapping	Paint	1			
NC2220	1 5/8	120"	Strut, Square	Tab Slots Self Tapping	Paint	1			
NC2030	1 5/8	20"	Universal Beam Mount		Paint	1			



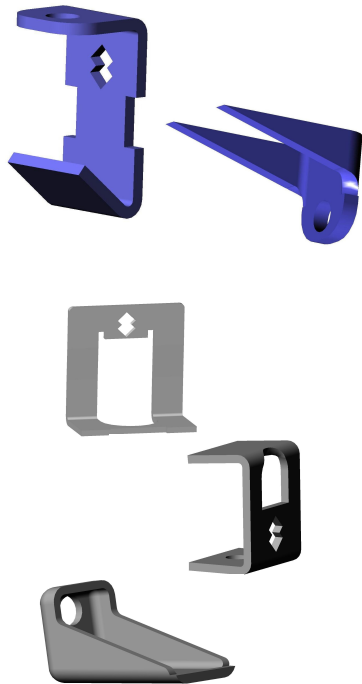
# NuClamp

## Wedge Clamps

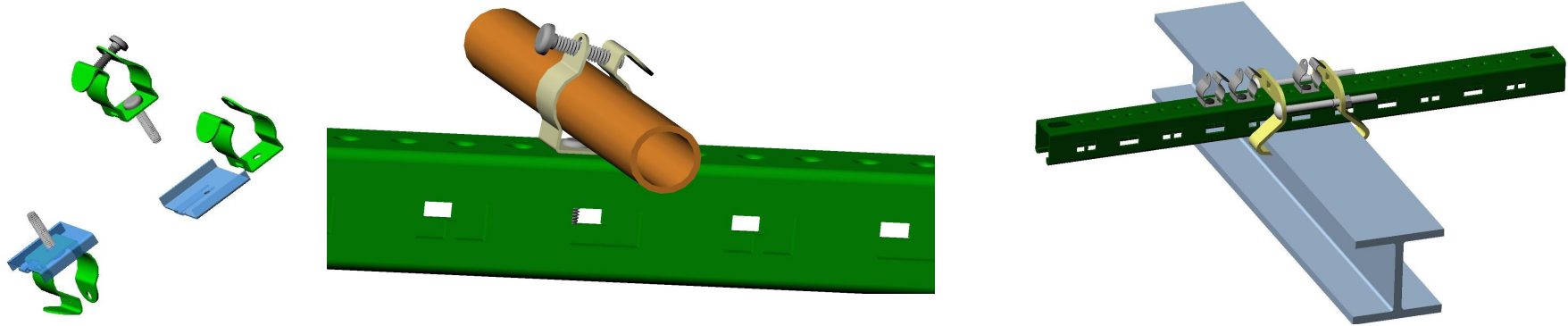
Wedge clamps do not create a load on the tip of a bolt like other clamps. There is no twisting and loosening of the clamp and no marring of the surface being clamped.

The wedge with an offset tab and hole allows a wedge to be pulled through an opening while the tip of the wedge and flat surface remain in contact with the object being clamped.

The use of a small wedge for inserting in a punched passage in a metal box such as houses a wall or ceiling heater allows very quick and easy installation.



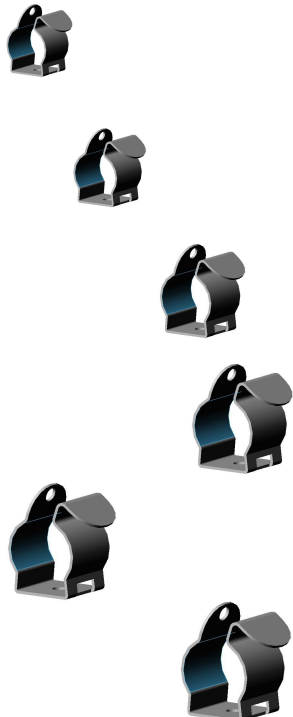
Part No.	Width	Length	Description	Style	Coating	Qt. / Pkg.			
NC4010			wedge Clamp Body	Split Point	Zinc	10			
NC4010			Wedge Clamp Wedge	Split Point	Zinc	10			
NC4010			wedge Clamp Body	Strut Hanger	Zinc	10			
NC4010			Wedge Clamp Hanger	Threaded Rod Attachment	Zinc	10			
NC4010	1/2	1	Wedge for mounting metal boxes in opening in Sheetrock		Zinc	10			



# NuClamp

## Pipe Clamps

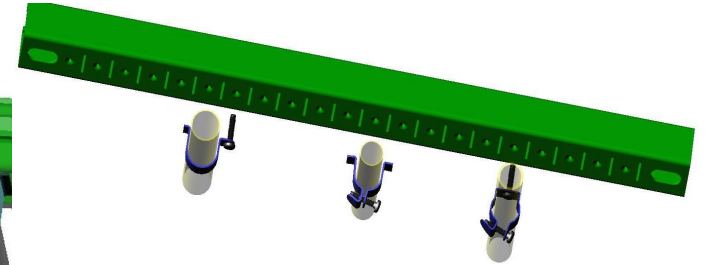
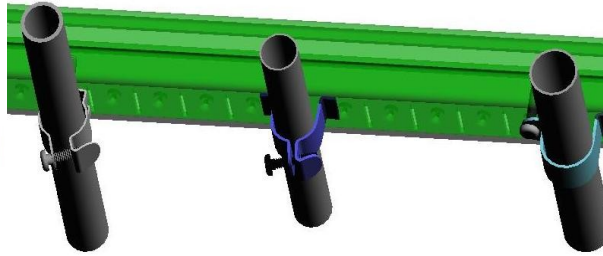
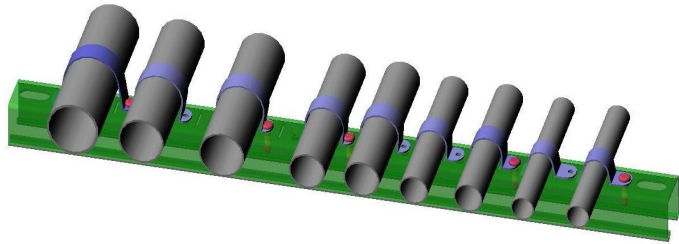
These pipe clamps are designed to clamp pipes using self tapping screws. They can be attached to any surface including to the open side of strut channels when PN NC5110 (retainer tab) is used. They are made specifically to attach to the NuClamp strut channels and universal wall mounts using the dimpled holes in those items. For safety these clamp have a rounded tab that protects from tips of screws.



Part No.	Nominal Size	OD	Description	Style	Coating	Qt. / Pkg.			
NC5010	1/2	0.84	Pipe Clamp	Self Tapping	Zinc	20			
NC5020	3/4	1.05	Pipe Clamp	Self Tapping	Zinc	20			
NC5030	1	1.32	Pipe Clamp	Self Tapping	Zinc	20			
NC5040	1 1/4	1.66	Pipe Clamp	Self Tapping	Zinc	10			
NC5050	1 1/2	1.90	Pipe Clamp	Self Tapping	Zinc	10			
NC5060	2	2.38	Pipe Clamp	Self Tapping	Zinc	10			



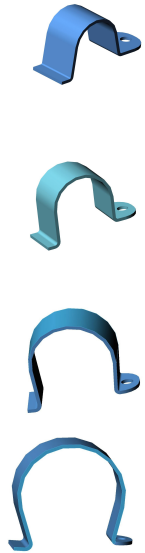
NC5110			Strut retainer clip	Self Tapping	Zinc	10			
--------	--	--	---------------------	--------------	------	----	--	--	--



# NuClamp

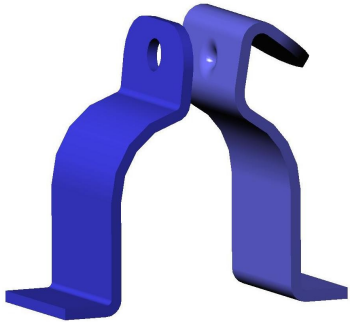
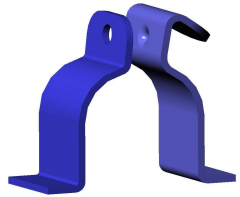
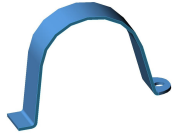
## Tabbed Pipe Clamps

These pipe clamps are designed to clamp pipes on to the NuClamp strut channels that has slots and dimpled holes. One self tapping screw is used per clamp per channel. They are made specifically to attach to the NuClamp strut channels and universal wall mounts using the slot and dimpled holes.



Part No.	Nominal Size	OD	Description	Style	Coating	Qt. / Pkg.			
NC5010	1/2	0.84	Pipe Clamp	Tab and Self Tapping	Zinc	20			
NC5020	3/4	1.05	Pipe Clamp	Tab and Self Tapping	Zinc	20			
NC5030	1	1.32	Pipe Clamp	Tab and Self Tapping	Zinc	20			
NC5040	1 1/4	1.66	Pipe Clamp	Tab and Self Tapping	Zinc	10			





NC5050	1 1/2	1.90	Pipe Clamp	Tab and Self Tapping	Zinc	10			
NC5010	1/2	0.84	Pipe Clamp	2 piece Tab and Self Tapping	Zinc	20			
NC5020	3/4	1.05	Pipe Clamp	2 piece Tab and Self Tapping	Zinc	20			
NC5030	1	1.32	Pipe Clamp	2 piece Tab and Self Tapping	Zinc	20			
NC5040	1 1/4	1.66	Pipe Clamp	2 piece Tab and Self Tapping	Zinc	10			
NC5050	1 1/2	1.90	Pipe Clamp	2 piece Tab and Self Tapping	Zinc	10			

